

Automotive Stacked Inductor



AMSLA-Q7050

Request Samples



Check Inventory



7.0 x 7.0 x 5.0 mm
RoHS/RoHS II Compliant
MSL Level = 1

Features

- AEC-Q200 Qualified
- Shielded construction
- Soft saturation
- High Power Density
- Low DCR, High Efficiency
- Designed for switching frequencies between 100KHz-2MHz

Applications

- Desktop/ Server applications
- High current point-of-load (POL) converters
- Lighting
- Solar inverters and power
- Industrial and robotics
- Medium and high-power switch mode power supplies.

Electrical Specifications

Part Number	Inductance	Tolerance	DC Resistance		Saturation Current	Temperature Rise Current
	0.1MHz/1V		Typ	Max	Max	Max
Units	nH	%	mΩ	mΩ	A	A
Symbol	L	M	DCR	DCR	Isat	Irms
AMSLA-Q7050-R07	72	20	0.23	0.35	58	45
AMSLA-Q7050-R10	105	20	0.23	0.35	46	45
AMSLA-Q7050-R15	150	20	0.23	0.35	30	45

Test Conditions

Isat: DC current at which the inductance drops 20% from its value without current.

Irms: DC current that causes the temperature rise (ΔT , approximate 40 °C) from 20°C ambient

Operating Temperature: -40°C ~ +125°C (including self-temperature rise)

Storage Condition: -40°C ~ +125°C (on board), -10°C ~ +40°C (with packaging), and R.H. 60 max

Operating Voltage: 40V (across inductor)

AMSLA-Q7050 is **RoHS Compliant and Pb free.**

AMSLA-Q7050 is **AEC-Q200 Qualified.**



12117 Bee Caves Rd, Bldg-3, Suite 200
Bee Cave, TX 78738
Phone: 512-371-6159 Fax: 512-351-8858
For terms and conditions of sales, please visit:
www.abracon.com

REVISION: A 06-10-26

ABRACON IS
ISO9001-2015
CERTIFIED

Automotive Stacked Inductor



AMSLA-Q7050

Request Samples



Check Inventory



7.0 x 7.0 x 5.0 mm
RoHS/RoHS II Compliant
 MSL Level = 1

Part Number Identification

AMSLA – Q7050 – [] [] – []

Inductance Code

See Electrical Specification table

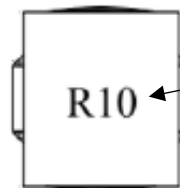
Tolerance

M = ± 20%

Packaging

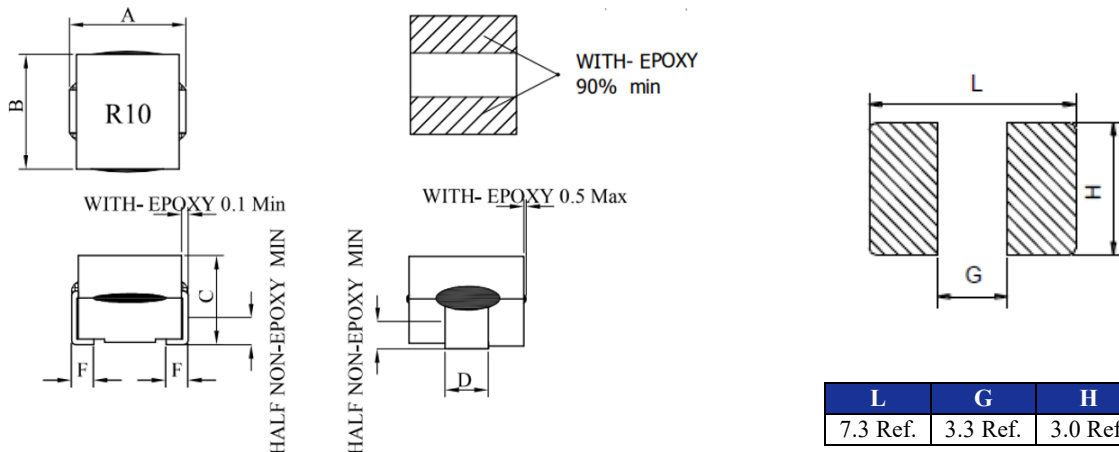
T: Tape and Reel (1000 pcs / reel)

Marking



Inductance Code

Mechanical Specifications



A	B	C	D	F
7.0 MAX	7.0 MAX	5.0 MAX	2.5 ± 0.3	1.3 ± 0.2

Dimensions: mm



12117 Bee Caves Rd, Bldg-3, Suite 200
 Bee Cave, TX 78738
 Phone: 512-371-6159 Fax: 512-351-8858
 For terms and conditions of sales, please visit:
www.abracon.com

REVISION: A 06-10-26

ABRACON IS
 ISO9001-2015
 CERTIFIED



AMSLA-Q7050

Request Samples

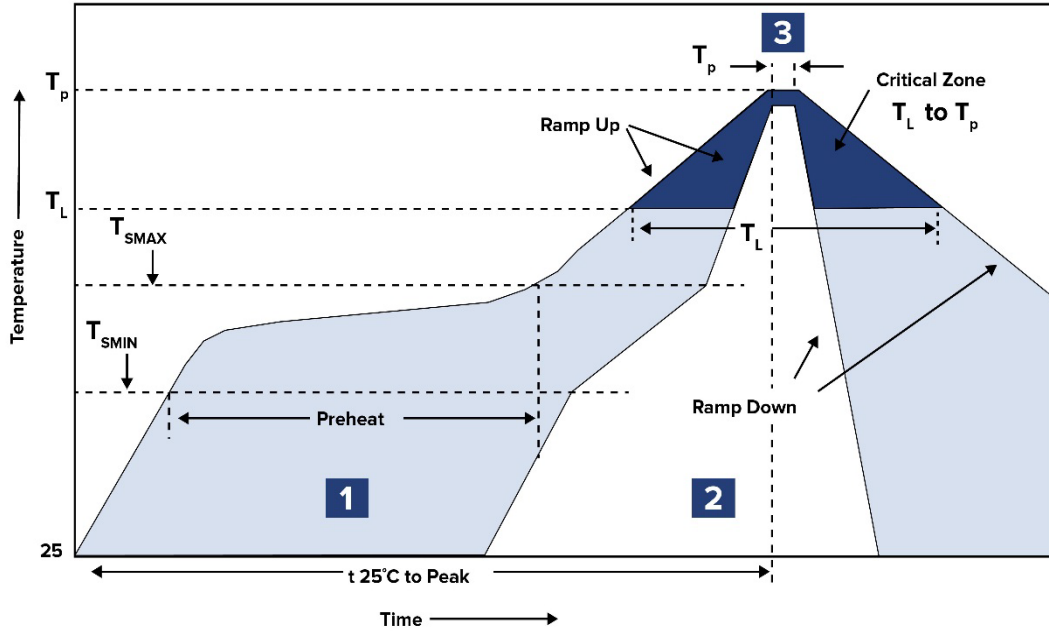


Check Inventory



7.0 x 7.0 x 5.0 mm
RoHS/RoHS II Compliant
MSL Level = 1

Reflow Profile



Zone	Description	Temperature	Times
1	Preheat	$T_{SMIN} \sim T_{SMAX}$ 150°C ~ 200°C	60 ~ 120 sec.
2	Reflow	T_L 217°C	60 ~ 150 sec.
3	Peak heat	T_P 245°C	10 sec. MAX

Automotive Stacked Inductor



AMSLA-Q7050

Request Samples



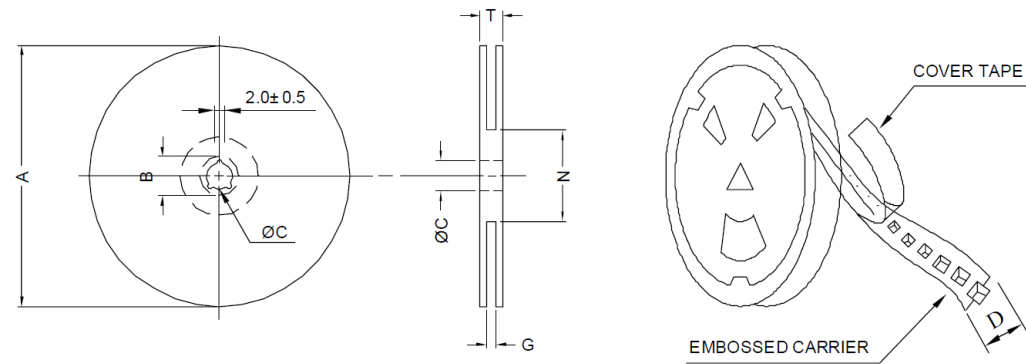
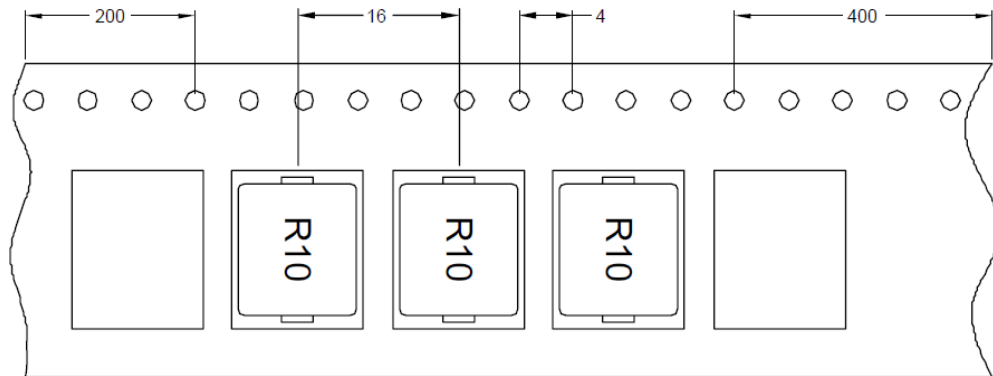
Check Inventory



7.0 x 7.0 x 5.0 mm
RoHS/RoHS II Compliant
MSL Level = 1

Packaging

Tape & Reel: 1000 pcs/reel



A	B	C	D	G	N	T
330	21 ±0.8	13.0±0.5	16.0	18.0 Max	50.0 Min	22.4

ATTENTION: Abracon LLC's products are Commercial-Off-The-Shelf (COTS), which are designed, intended and validated for use in commercial, industrial and automotive applications. The customer is responsible for testing and verifying the performance of an Abracon solution to meet their system-level requirements.



12117 Bee Caves Rd, Bldg-3, Suite 200
 Bee Cave, TX 78738
 Phone: 512-371-6159 Fax: 512-351-8858
 For terms and conditions of sales, please visit:
www.abracon.com

REVISION: A 06-10-26

ABRACON IS
 ISO9001-2015
 CERTIFIED