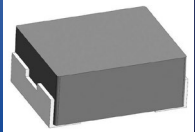


Molded Inductor



AMELA2012S

Request Samples



Check Inventory



2.5 x 2.0 x 1.2 mm
RoHS/RoHS II Compliant
MSL Level = 1

Features

- Shielded Construction
- Soft Saturation
- Highly Efficient
- Designed for switching frequencies between 100KHz – 5MHz
- Automotive option available upon request

Applications

- Buck DC/DC Converters
- Buck-Boost DC/DC converters
- Power Factor Correction applications
- Server/ Workstation VRM's
- Industrial power supplies
- Solar inverters / Renewable Energy Systems
- Battery energy storage systems
EMI/Power line filtering chokes
- Industrial / Heavy equipment

Electrical Specifications

| Part Number* | Inductance (uH) | Tolerance (%) | Irms (A) | Isat (A) | DC Resistance (mΩ) | | Type |
|------------------|-----------------|---------------|----------|----------|--------------------|------|------------|
| | | | | | Typ | Max | |
| AMELA2012S-R33MT | 0.33 | 20 | 5.8 | 7.0 | 15 | 16.5 | Lead Frame |
| AMELA2012S-R47MT | 0.47 | 20 | 4.8 | 6.0 | 20 | 25 | Lead Frame |
| AMELA2012S-R68MT | 0.68 | 20 | 3.9 | 4.6 | 30 | 34 | Lead Frame |
| AMELA2012S-1R0MT | 1 | 20 | 3.7 | 4.3 | 38 | 45 | Lead Frame |
| AMELA2012S-1R5MT | 1.5 | 20 | 2.9 | 3.0 | 53 | 60 | Lead Frame |
| AMELA2012S-2R2MT | 2.2 | 20 | 2.4 | 2.7 | 78 | 90 | Lead Frame |

Test Conditions

Inductance: 1 MHz, 1 V, 0 ADC

Humidity Range: 65% RH

Temperature Rise Current: Typical current measured when ΔT of 40°C

Saturation Current: Typical current measured when ΔL of 30%

General Specifications

Operating Temperature: -55°C to +125°C with (40°C rise) Irms current.

Maximum Part Temperature: +125°C

Components Storage Temperature: -55°C to +125°C

Tape and Reel packaging Temperature: -20°C to +65°C

AMELA2012S Series is **RoHS/ RoHS II Compliant and Pb free.**

Moisture Sensitivity Level (MSL) – Level 1

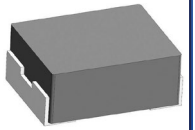


12117 Bee Caves Rd, Bldg-3, Suite 200
Bee Cave, TX 78738
Phone: 512-371-6159 Fax: 512-351-8858
For terms and conditions of sales, please visit:
www.abracon.com

REVISION A : 12/22/2025

ABRACON IS
ISO9001-2015
CERTIFIED

Molded Inductor



AMELA2012S

Request Samples



Check Inventory



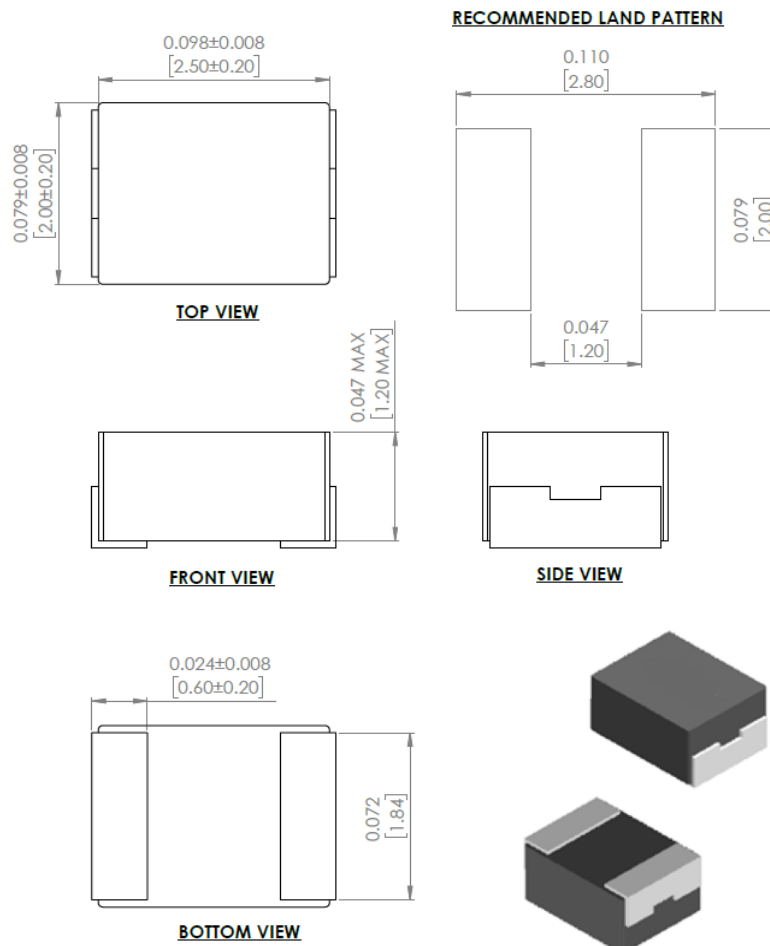
2.5 x 2.0 x 1.2 mm
RoHS/RoHS II Compliant
MSL Level = 1

Part Identification

AMELA2012S -

| Inductance Code | Tolerance | Packaging |
|---|-----------|------------------------------|
| Refer to Electrical Specification table E.g. R22 | M: 20% | B: Bulk T: 3,000 pcs/reel |

Mechanical Specifications



Dimensions: mm



12117 Bee Caves Rd, Bldg-3, Suite 200
Bee Cave, TX 78738
Phone: 512-371-6159 Fax: 512-351-8858
For terms and conditions of sales, please visit:
www.abracon.com

REVISION A : 12/22/2025

ABRACON IS
ISO9001-2015
CERTIFIED

Molded Inductor



AMELA2012S

Request Samples



Check Inventory



2.5 x 2.0 x 1.2 mm
RoHS/RoHS II Compliant
MSL Level = 1

Reflow Profile

Reflow standard: [JEDEC J-STD-020]

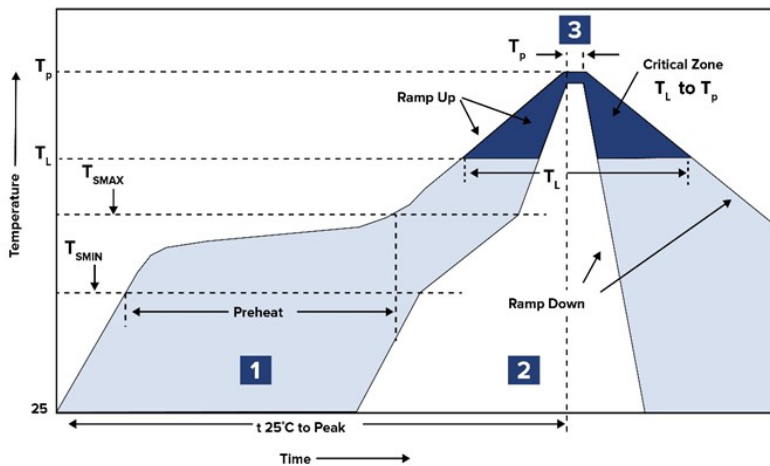


Table 1

| SnPb Eutectic Process Classification Temperatures (T_c) | | |
|---|-----------------------------|-----------------------------|
| Package Thickness | Volume mm ³ <350 | Volume mm ³ ≥350 |
| <2.5 mm | 235 °C | 220 °C |
| ≥2.5 mm | 220 °C | 220 °C |

Table 2

| Pb-Free Process Classification Temperatures (T_c) | | | |
|---|-----------------------------|---------------------------------|------------------------------|
| Package Thickness | Volume mm ³ <350 | Volume mm ³ 350-2000 | Volume mm ³ >2000 |
| <1.6 mm | 260 °C | 260 °C | 260 °C |
| 1.6 mm - 2.5 mm | 260 °C | 250 °C | 245 °C |
| >2.5 mm | 250 °C | 245 °C | 245 °C |

| Profile Feature | Sn-Pb Eutectic Assembly | Pb-Free Assembly |
|---|-------------------------|------------------|
| Preheat / soak | | |
| Temperature minimum (T_{smin}) | 100°C | 150°C |
| Temperature maximum (T_{smax}) | 150°C | 200°C |
| Time (T_{smin} to T_{smax}) (t_s) | 60 - 120 sec. | 60 - 120 sec. |
| Average ramp-up rate (T_{smax} to T_P) | 3°C/sec. max | 3°C/sec. max |
| Liquidous temperature (T_L) | 183°C | 217°C |
| Time at liquidous (t_L) | 60 - 150 sec. | 60 - 150 sec. |
| Peak package body temperature (T_P)* | see Table 1 | see Table 2 |
| Time (t_p)** within 5°C of the specified classification temperature (T_c) | 20 sec. | 30 sec. |
| Ramp-down rate (T_P to T_{smax}) | 6°C/sec. max | 6°C/sec. max |
| Time 25°C to peak temperature | 6 min. max | 8 min. max |
| Reflow cycles | 2 max | 2 max |

*Tolerance for peak profile temperature (T_P) is defined as a supplier minimum and a user maximum.

**Tolerance for time at peak profile temperature (t_p) is defined as supplier minimum and a user maximum.

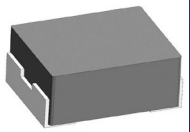


12117 Bee Caves Rd, Bldg-3, Suite 200
Bee Cave, TX 78738
Phone: 512-371-6159 Fax: 512-351-8858
For terms and conditions of sales, please visit:
www.abracon.com

REVISION A : 12/22/2025

ABRACON IS
ISO9001-2015
CERTIFIED

Molded Inductor



AMELA2012S

Request Samples



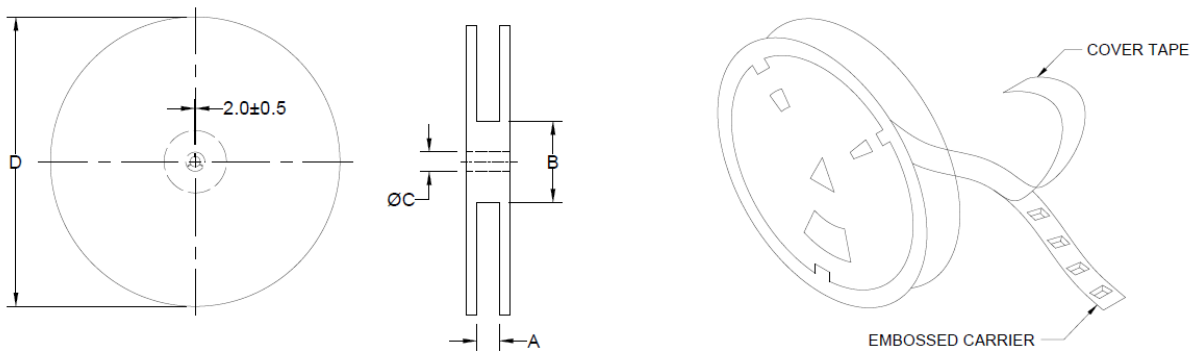
Check Inventory



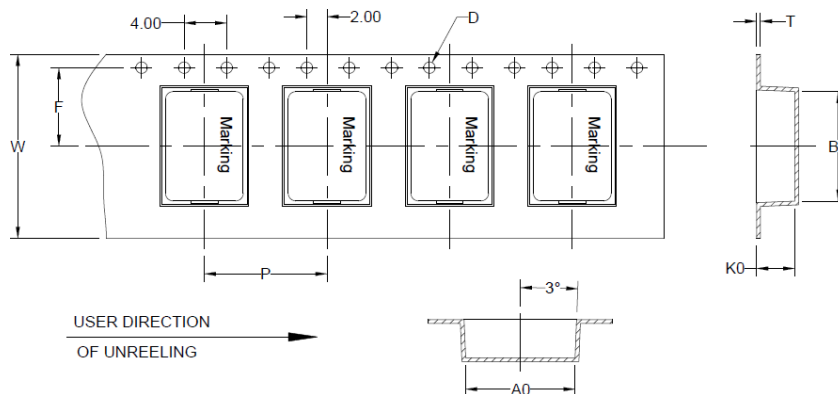
2.5 x 2.0 x 1.2 mm
RoHS/RoHS II Compliant
MSL Level = 1

Packaging

Tape and Reel: 3,000
 Units per Carton: 144,000
 T&R per Carton: 48
 Weight per Carton: 6.3 kg
 Weight per Unit: 0.06 g
 Carton Dimensions: 450 x 380 x 210 mm



| TYPE | A | B | C | D |
|-----------|-----------|------------|------------|-----------|
| 7" x 8 mm | 9.7 ± 0.5 | 50.0 ± 0.5 | 13.0 ± 0.1 | 183 ± 3.0 |



| B ₀ | A ₀ | K ₀ | P | W | F | T | D |
|----------------|----------------|----------------|-----------|-----------|-----------|-------------|-----|
| 2.85 ± 0.1 | 2.4 ± 0.1 | 1.35 ± 0.05 | 4.0 ± 0.1 | 8.0 ± 0.1 | 3.5 ± 0.1 | 0.25 ± 0.03 | 1.5 |

Dimensions: mm

ATTENTION: Abracon LLC's products are Commercial-Off-The-Shelf (COTS), which are designed, intended and validated for use in commercial, industrial and automotive applications. The customer is responsible for testing and verifying the performance of an Abracon solution to meet their system-level requirements.



12117 Bee Caves Rd, Bldg-3, Suite 200
 Bee Cave, TX 78738
 Phone: 512-371-6159 Fax: 512-351-8858
 For terms and conditions of sales, please visit:
www.abracon.com

REVISION A : 12/22/2025

ABRACON IS
 ISO9001-2015
 CERTIFIED