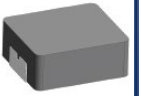


# Molded Inductor



**AMDLA7030S**

Request Samples



Check Inventory



7.1 x 6.6 x 2.8 mm  
RoHS/RoHS II Compliant  
MSL Level = 1

## Features

- Shielded construction
- Soft saturation
- High operating temperature up to 155°C
- Designed for switching frequencies between 100KHz-2MHz

## Applications

- DC/DC Switching converters
- Power supplies for Notebooks, workstations, and Servers
- Low Profile applications
- High current, transient load applications

## Electrical Specifications

Part Number	Inductance	Tolerance	DC Resistance		Saturation Current	Temperature Rise Current
	0.1MHz/1.0V		Max	Typ.	Typ.	Typ.
Units	μH	%	mΩ		A	A
Symbol	L	M	DCR		Isat	Irms
AMDLA7030S-R15N	0.15	30	2.1	1.7	36.0	25.0
AMDLA7030S-R22M	0.22	20	2.5	2.0	32.0	21.0
AMDLA7030S-R33M	0.33	20	3.4	2.8	22.0	20.0
AMDLA7030S-R36M	0.36	20	3.9	3.3	21.0	18.0
AMDLA7030S-R47M	0.47	20	4.0	3.4	18.0	16.0
AMDLA7030S-R56M	0.56	20	4.5	3.9	16.0	15.0
AMDLA7030S-R68M	0.68	20	5.3	4.7	15.0	14.5
AMDLA7030S-R82M	0.82	20	6.0	5.4	14.0	13.0
AMDLA7030S-1R0M	1	20	7.4	5.7	13.5	11.0
AMDLA7030S-1R2M	1.2	20	9.5	7.7	12.5	9.5
AMDLA7030S-1R5M	1.5	20	12.1	10.2	12.0	9.0
AMDLA7030S-2R2M	2.2	20	15.0	13.5	9.0	7.5
AMDLA7030S-2R7M	2.7	20	20.0	17.3	8.8	7.0
AMDLA7030S-3R3M	3.3	20	22.0	19.0	8.5	6.0
AMDLA7030S-4R7M	4.7	20	33.0	28.0	5.5	5.0
AMDLA7030S-5R6M	5.6	20	42.0	39.0	5.2	5.0
AMDLA7030S-6R8M	6.8	20	50.0	43.0	5.0	4.2
AMDLA7030S-8R2M	8.2	20	60.0	54.0	4.7	4.0
AMDLA7030S-100M	10	20	68.0	62.0	4.5	3.5
AMDLA7030S-150M	15	20	140	110	4.0	2.5
AMDLA7030S-220M	22	20	190	150	2.5	2.0

\*For full orderable part number, please refer to the [Part Identification](#) section.

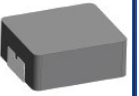


12117 Bee Caves Rd, Bldg-3, Suite 200  
Bee Cave, TX 78738  
Phone: 512-371-6159 Fax: 512-351-8858  
For terms and conditions of sales, please visit:  
[www.abracon.com](http://www.abracon.com)

REVISION B : 4/21/2026

ABRACON IS  
ISO9001-2015  
CERTIFIED

# Molded Inductor



AMDLA7030S

Request Samples



Check Inventory



7.1 x 6.6 x 2.8 mm  
RoHS/RoHS II Compliant  
MSL Level = 1

## Test Conditions

**Isat:** DC current at which the inductance drops 30% from its nominal value at 25°C.

**Irms:** DC current that causes the temperature rise ( $\Delta T$ , approximate 40 °C) from 25°C ambient.

**Operating Temperature:** -55°C ~ +155°C. (including self-temperature rise)

**Storage Condition:** -55°C ~ +155°C (on board), -55°C ~ +80°C (with packaging) and R.H. 60 max/

**Operating Voltage:** 50V (across inductor)

AMDLA7030S Series is **RoHS Compliant and Pb free.**

AMDLA7030S Series is **AEC-Q200 Grade 0 qualified (-55°C ~ +155°C)**

## Part Identification

AMDLA7030S -

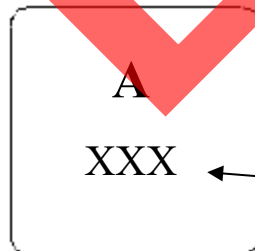
Inductance Code
See Electrical Specification table e.g. 1R0 for 1uH

Tolerance
M = $\pm 20\%$
N = $\pm 30\%$

Packaging options
T: Tape and Reel (See Packaging)
B: Bulk

\*Tolerance only available as indicated in electrical spec. table

## Marking



Inductance Code  
e.g. 2R2

Marking Method = Ink Marking

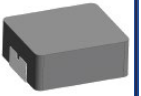


12117 Bee Caves Rd, Bldg-3, Suite 200  
Bee Cave, TX 78738  
Phone: 512-371-6159 Fax: 512-351-8858  
For terms and conditions of sales, please visit:  
www.abracon.com

REVISION B : 4/21/2026

ABRACON IS  
ISO9001-2015  
CERTIFIED

# Molded Inductor



AMDLA7030S

Request Samples

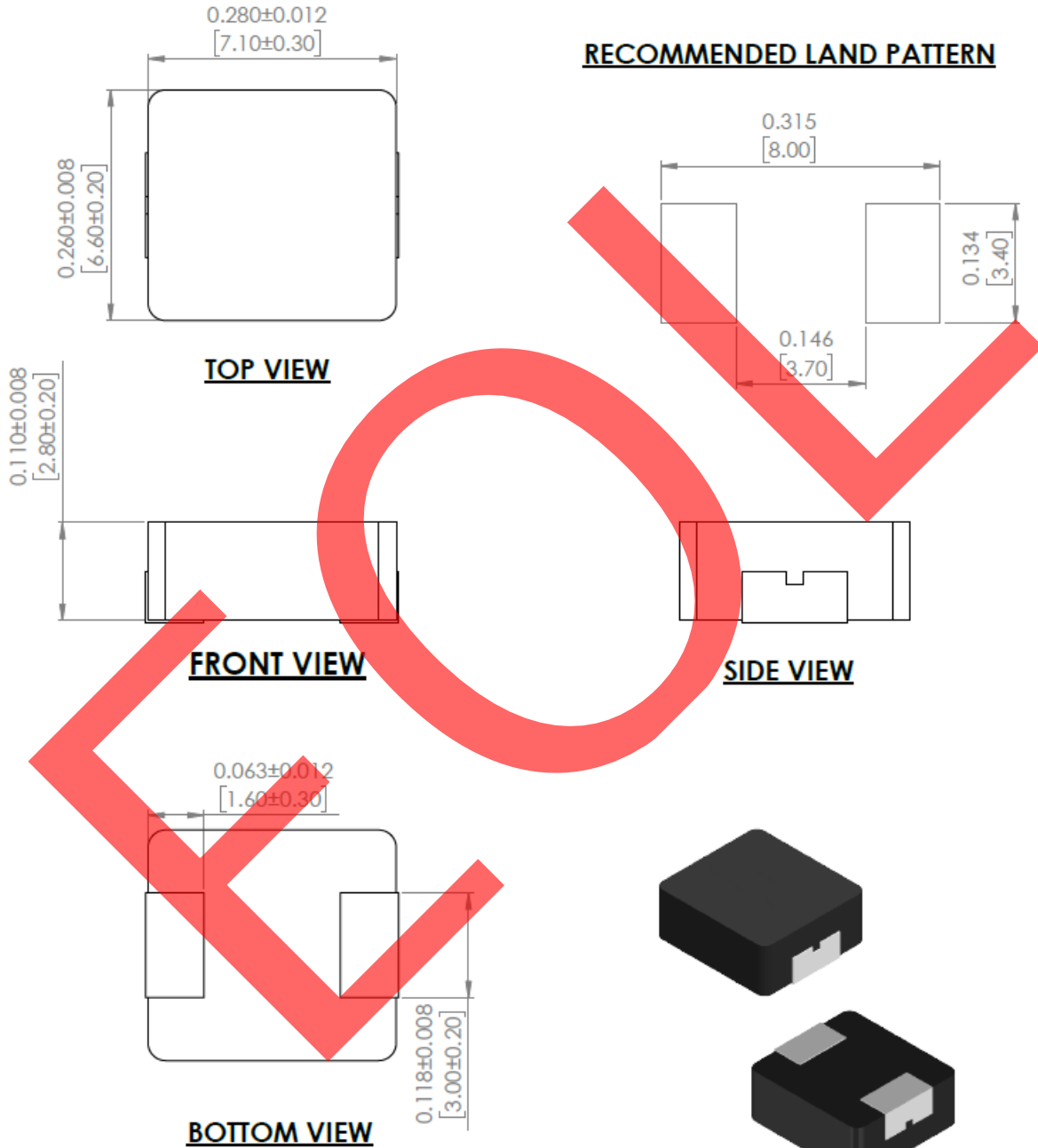


Check Inventory



7.1 x 6.6 x 2.8 mm  
RoHS/RoHS II Compliant  
MSL Level = 1

## Mechanical Specifications



Dimensions: inches[mm]

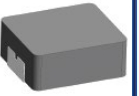


12117 Bee Caves Rd, Bldg-3, Suite 200  
Bee Cave, TX 78738  
Phone: 512-371-6159 Fax: 512-351-8858  
For terms and conditions of sales, please visit:  
[www.abracon.com](http://www.abracon.com)

REVISION B : 4/21/2026

ABRACON IS  
ISO9001-2015  
CERTIFIED

# Molded Inductor



AMDLA7030S

Request Samples

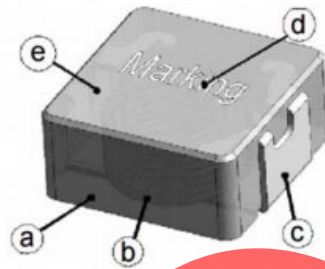


Check Inventory



7.1 x 6.6 x 2.8 mm  
RoHS/RoHS II Compliant  
MSL Level = 1

## Materials



- (a) Core
- (b) Wire
- (c) Terminal
- (d) Ink
- (e) Paint

a	Core	Metal Alloy
b	Wire	Copper
c	Terminal	Tin Plating
d	Ink	Black

Item	Description	Material Type	Composition (%)
Core	Metal Alloy	Fe	93.8
		Si	4.2
		Cr	2
Wire	Round Wire	Cu	100

# Molded Inductor



AMDLA7030S

Request Samples

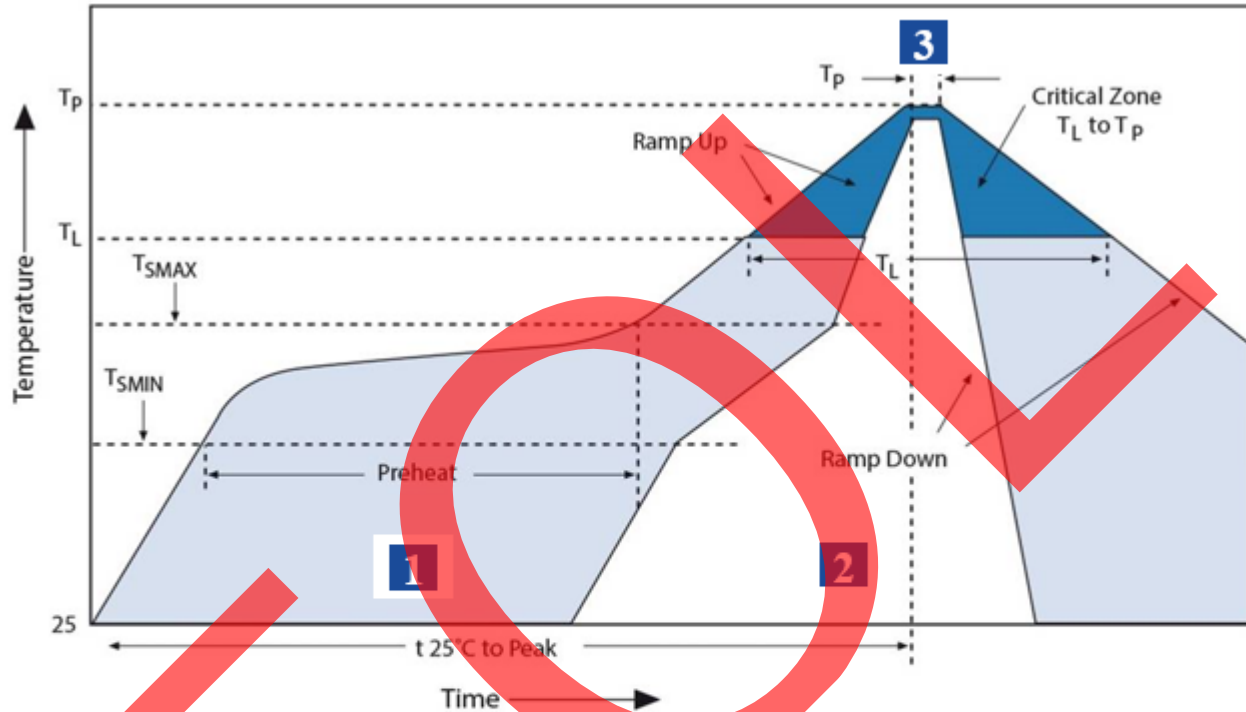


Check Inventory



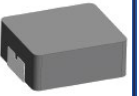
7.1 x 6.6 x 2.8 mm  
RoHS/RoHS II Compliant  
MSL Level = 1

## Reflow Profile



Zone	Description	Temperature	Times
1	Preheat	T <sub>SMIN</sub> ~ T <sub>SMAX</sub> 150°C ~ 200°C	60 ~ 180 sec.
2	Reflow	T <sub>L</sub> 217°C	60 ~ 150 sec.
3	Peak heat	T <sub>p</sub> 260°C	10 sec. MAX

# Molded Inductor



**AMDLA7030S**

Request Samples



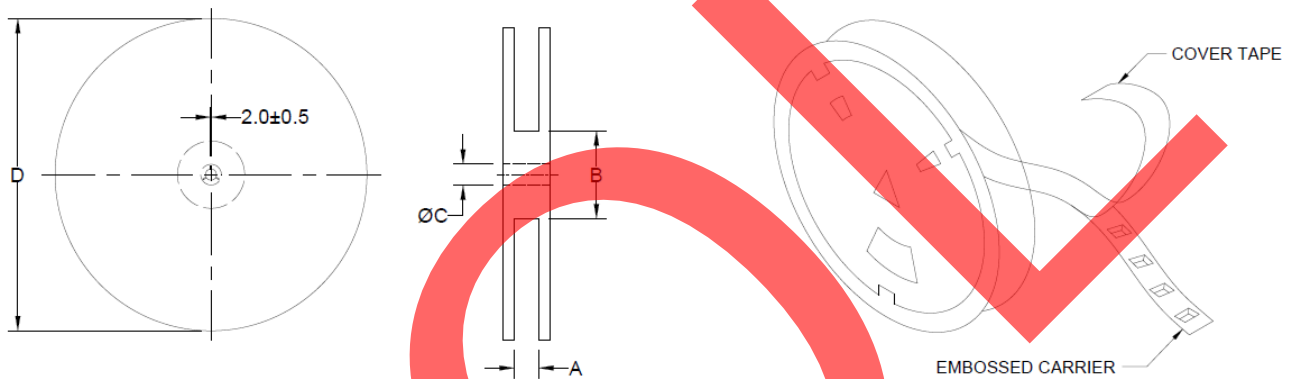
Check Inventory



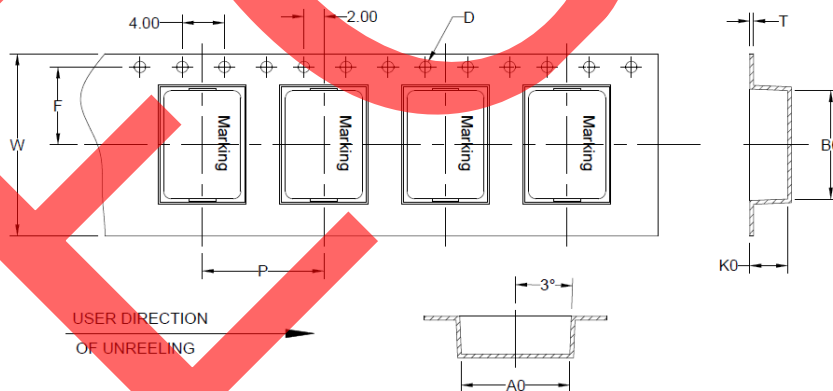
**7.1 x 6.6 x 2.8 mm**  
**RoHS/RoHS II Compliant**  
**MSL Level = 1**

## Packaging

Tape & Reel: 1,000 pcs/reel  
 Pieces per Carton: 8,000  
 T&R per Carton: 8  
 Weight per Carton: 11.0kg  
 Weight per Piece: 0.7g  
 Carton Dimensions: 410 x 325 x 415mm



Type	A	B	C	D
13" x 16 mm	16.4 +2/-0	100 ± 2.0	13.5 ± 0.5	330



B <sub>0</sub>	A <sub>0</sub>	K <sub>0</sub>	P	W	F	T	D
7.7 ± 0.1	7.0 ± 0.1	3.3 ± 0.1	12.0 ± 0.1	16.0 ± 0.3	7.5 ± 0.1	0.35 ± 0.05	1.5 ± 0.1

**Dimensions: mm**

**ATTENTION:** Abracon LLC's products are Commercial-Off-The-Shelf (COTS), which are designed, intended and validated for use in commercial, industrial and automotive applications. The customer is responsible for testing and verifying the performance of an Abracon solution to meet their system-level requirements.



12117 Bee Caves Rd, Bldg-3, Suite 200  
 Bee Cave, TX 78738  
 Phone: 512-371-6159 Fax: 512-351-8858  
 For terms and conditions of sales, please visit:  
[www.abracon.com](http://www.abracon.com)

**REVISION B : 4/21/2026**

ABRACON IS  
 ISO9001-2015  
 CERTIFIED